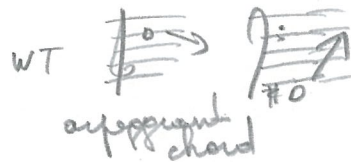


Ambulatory intro



WT re-tension only 2 chords

WT > < tonal

Rep I Chorus I ebm -> gm -> bm -> fm

Chorus II WT chordal ost tes

Transition

Chorus A [48 bars]

Chorus I

* WT → (begin with prec.)

B x 6 in canon f tes Pedal

B x 6 in canon f tes Ped

Chorus II

A x 8 in canon PP

E x 8 in canon mf

A x 8 in canon sf

(Verschiebung) (mirrored ABCBA)

Rep II

WT →

ost tes

c#m G M

Chorus B [32 bars]

Chorus I

WT → in PP

B (2 bars earlier) x 6 mf stretto

B (6 bars earlier) f x 6

Chorus II

A x 8 in canon PP

C (4 bars earlier) in p x 8 stretto

A in ff x 8

mirrored sequence Chorus 1, 2 of Chorus A

overlap begin WT

● Rap III

Chorus I	Chorus II
end WT ayepp. chord	
BM	+ eeo
E6M	+ eca
	bes pedal

first time total verticalisation // text

AM → DbM → FM

bar 206 liquefies into WT vertical chord

● Chorus C [= 28 bars]

Chorus I	Chorus II
A pp x 7	B p x 6
C mf x 8	B f x 6
A sf x 8	

(A → B after 4 bars)
 (C → B w/)
 (A ← B w/)

● Coda

- on bes // into

initiative in chorus II

$XI \overset{6}{\underset{bes}{\parallel}} XII \overset{6}{\underset{fa}{\parallel}} XI \overset{6}{\underset{bes}{\parallel}} XII \overset{4}{\underset{bes}{\parallel}} \mid XI \overset{6}{\underset{bes}{\parallel}} XII \overset{6}{\underset{bes}{\parallel}} XII \overset{6}{\underset{bes}{\parallel}} XII$

- fa
 be
 coadunza
 diabolica
 in musica
 mi
 si
 mi